

Custom Size OPTIMA® Ceiling Panels

Installation Instructions

1. PRODUCT DESCRIPTION

This product category consists of standard 3/4", 1" and 1-1/2" thick Optima fiberglass panels, but available in custom sizes ranging in width from 12" to 48" and in length from 12" to 120". Panels are available with or without CAC backing.

Armstrong limits the weight of an individual ceiling panel to 20 lbs. unless those panels are attached to the grid system. This restraint limits the maximum size of a 1-1/2" thick panel to 39 sf for unbacked panels and 31 sf for CAC backed product.

Panel edges can be lay-in for 15/16" T-bar grid or Tegular for either 9/16" or 15/16" grid.

No special installation requirements are necessary for panels less than 5' in length. However, when any panel edge exceeds 5' some additional considerations are necessary to ensure the integrity of the ceiling system.

2. SUSPENSION SYSTEM

Suspension systems, whether 9/16" or 15/16", shall be installed to meet the minimum requirements established in the ASTM C636 standard and any other requirements established by local code.

2' wide panels require a minimum of 3" of clearance for installation. 4' wide panels require 8" of clearance.

3. PERIMETER TREATMENT

Perimeter panels, less than full size, shall be neatly trimmed and installed either by re-cutting the Tegular edge detail or by concealing the cut edge on the horizontal flange of a perimeter molding.

When the edge of the panel rests on the molding it must be shimmed or border springs must be used to prevent the possibility of the panel shifting toward the wall far enough to permit the opposite edge to drop off of the grid flange.

All field cut edges "exposed to view" should be colored to match the factory finish. Armstrong SuperCoat™ Ceiling Panel Touch-up Paint is recommended.

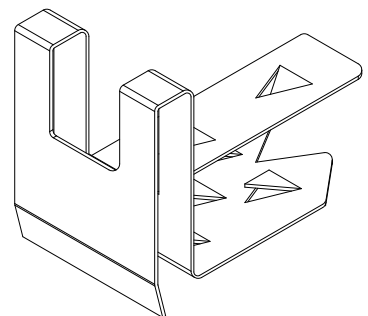
4. SPECIAL CONSIDERATIONS FOR LONG PANELS

During the installation process, or when a panel is removed from the grid for plenum access, a careless movement could cause the grid member to be bumped away from the adjacent panel. Under this condition it is possible for that panel to fall from the ceiling plane.

Armstrong recommends the use of #435 Stabilizer Clips for 3/4" and 1" thick panels and #436 for 1-1/2" panels. These clips are imbedded into the edges of the panels. The clips saddle over the suspension system, and serve to prevent the grid from moving away from the panel edge.

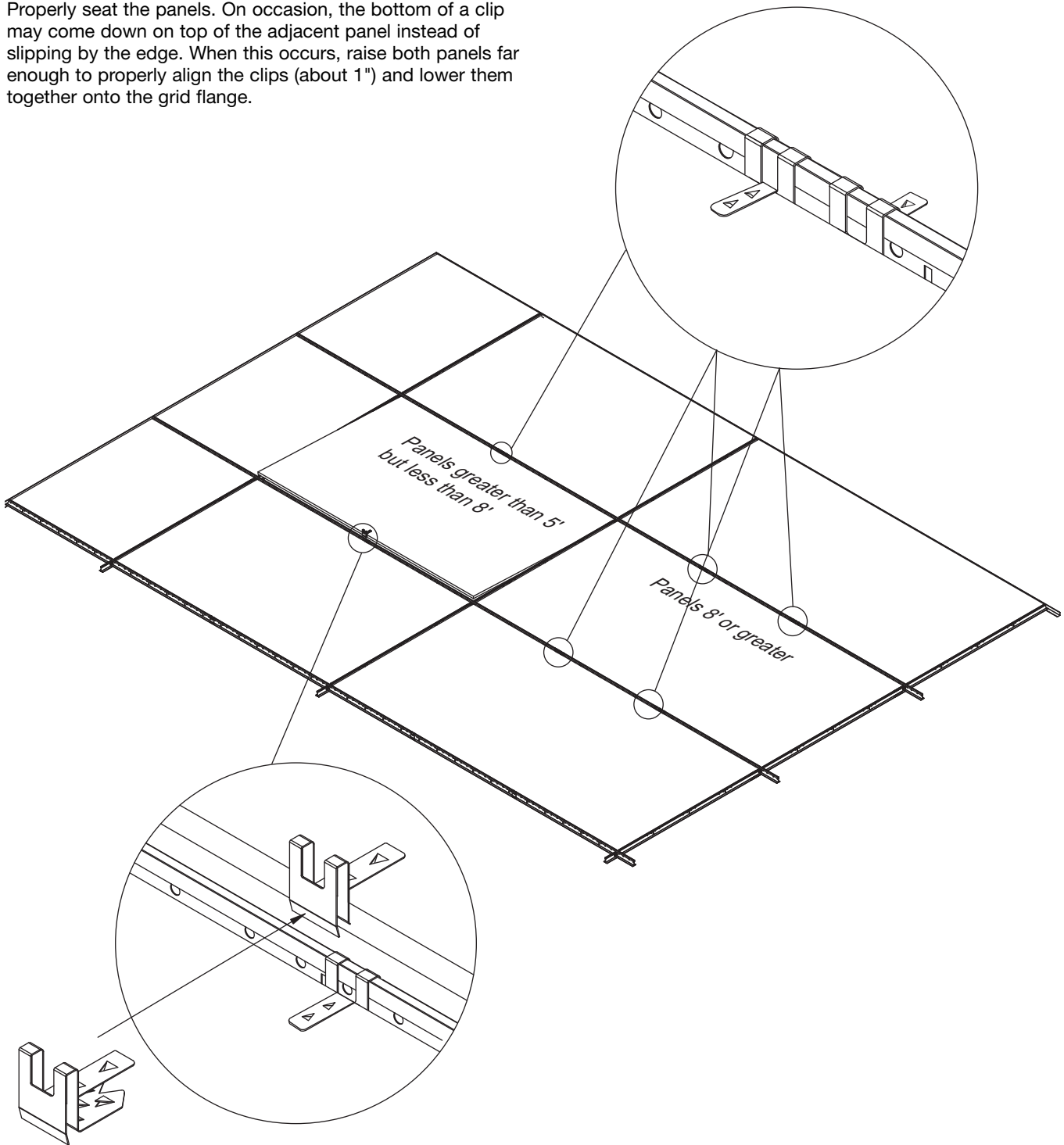
Panels longer than 5' and up to 8' in length should have one clip installed near the midpoint of each long edge. Panels 8' and longer should have two clips placed at one-third points along the long edges.

Clips may be installed either before or after the panel is raised above the grid system. The preferred installation method is to install the panel in the grid, and then raise the edge high enough to permit installation of the clips. If installing the clips prior to panel installation, place them where the hanger wires will not interfere with their function.



Stabilizer Clip

Properly seat the panels. On occasion, the bottom of a clip may come down on top of the adjacent panel instead of slipping by the edge. When this occurs, raise both panels far enough to properly align the clips (about 1") and lower them together onto the grid flange.



Clips are installed by resting the upper barbed flange on the top side of the panel (face side down) and pressing the two pointed flanges into the edge of the board until the clip is fully seated into the panel edge.

MORE INFORMATION

For more information, or for an Armstrong representative, call 1 877 ARMSTRONG.

For complete technical information, detail drawings, CAD design assistance, installation information and many other technical services, call TechLine™ services at 1 877 ARMSTRONG or FAX 1 800 572 TECH.

For the latest product selection and specification data, visit armstrong.com/ceilings.

U.S. Patent 5,674,594.

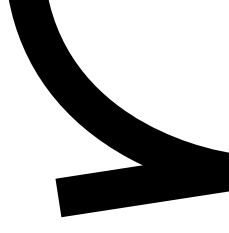
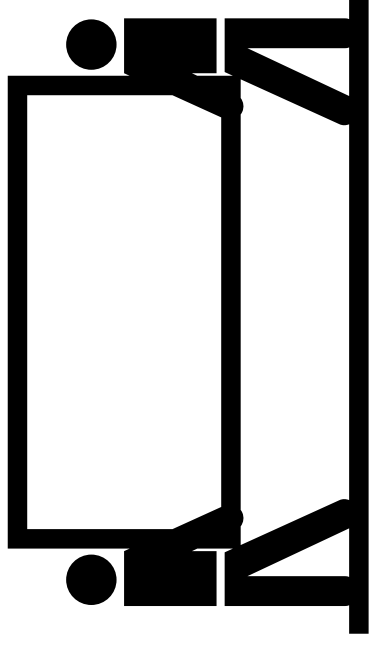
All Trademarks are owned by AWI Licensing Company

LA-295690-309

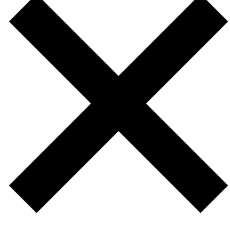
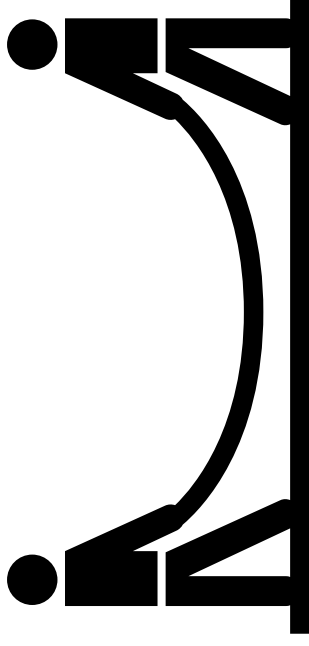
Printed in United States of America



**CARRY IN VERTICAL
POSITION ONLY**



**DO NOT CARRY IN
THE FLAT POSITION**



**DO NOT DROP ON
CORNER**

